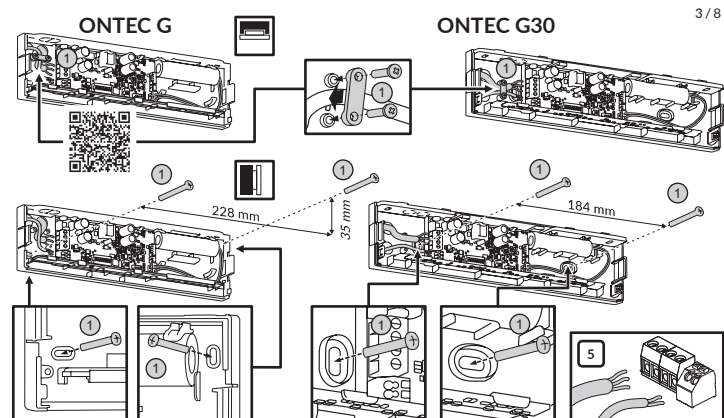


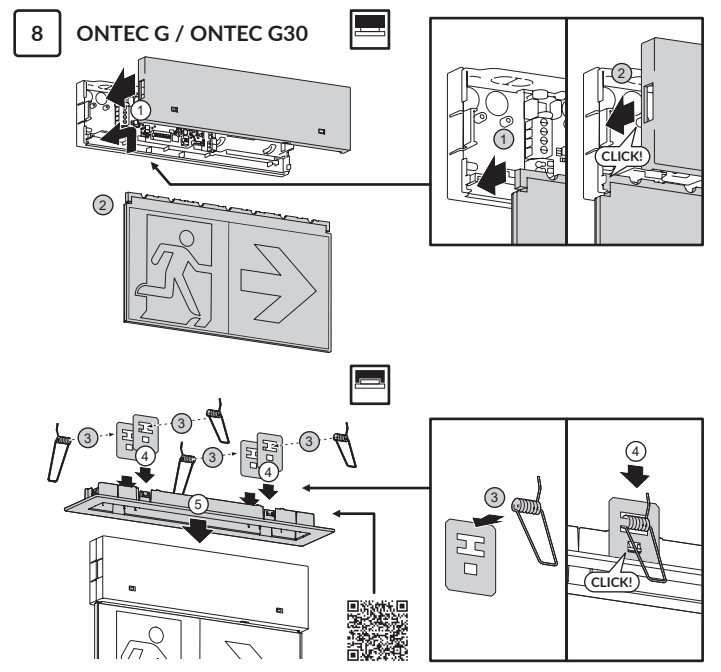
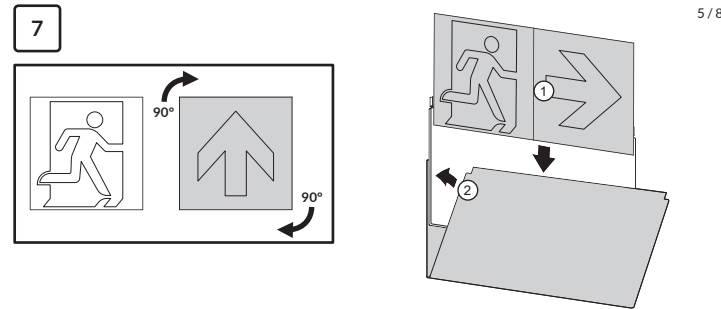
2

CBA, CBM				60/180		480	
AC	L1 ON	L1 OFF	L ON	L OFF	NM	M	
ON	ON	OFF	ON	OFF	60 / High	180 / Low	
OFF	OFF	ON	OFF	ON	M 60 / High	M 180 / Low	



5

010221(X): ST, AT	010299(X): ST	010371(X): ST, AT	010221(X): DT, D2, DA
010371(X): D2, D3, DL	010221(X): D2R	010371(X): D2R, D3R, DB	010221(X): CB
010553(X): CB 24/48, CBM 48	010312(X) E: CB+, CBA, CBM	010312(X) P: CBA, CBM (L+L1)	



7/8

	L [mm]	W [mm]	L1 [mm]	W1 [mm]	H [mm]
OG	251	29	292	70	198
OG30	301		342		223

DEKLARACJA ZGODNOŚCI UE I EU DECLARATION OF CONFORMITY I EU PROHLÁŠENÍ O SHODĚ I EÚ VYHLÁŠNIE O ZHODE I UK DECLARATION OF CONFORMITY



2/8

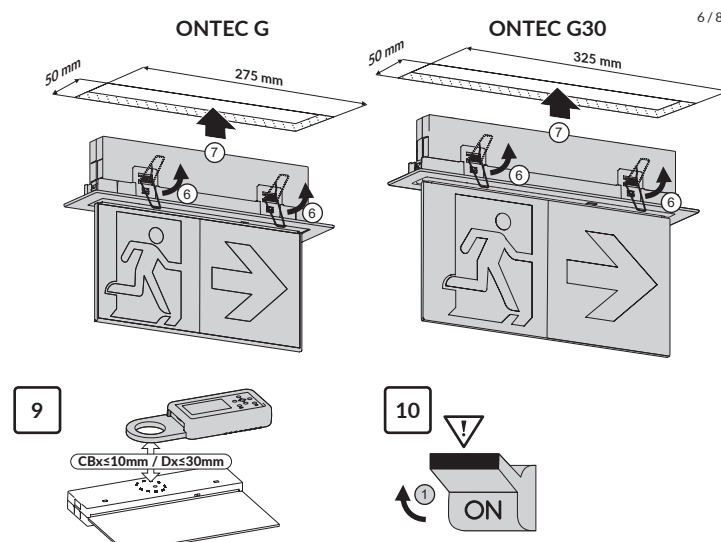
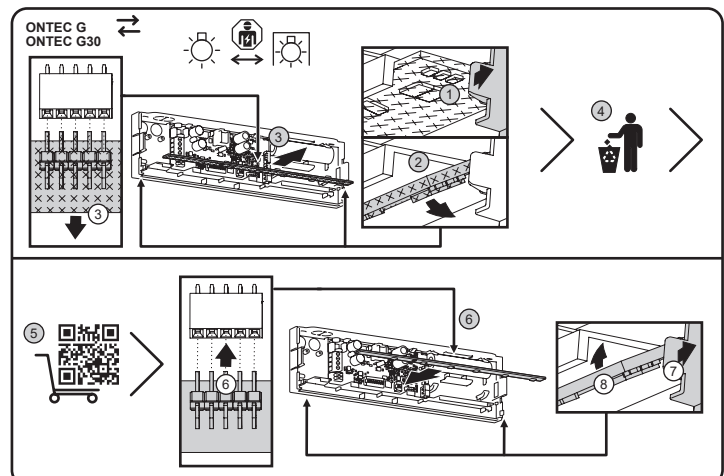
CBA, CBM					
L+	L1	L	DIP-SW	CB COMMAND	OUTPUT LIGHT SOURCE
1	DC ON	AC ON/OFF		-	ON
2	AC ON	AC ON/OFF		-	ON
3	AC OFF	AC ON/OFF		-	OFF
4	AC ON	AC ON/OFF		-	ON
5	AC ON/OFF	AC ON		-	ON

4/8

010312(X) P: CBA, CBM (L)	010312(X) P: CBA, CBM (L1)

6

ONTEC G	ONTEC G30
LiFePO4/C	
3.2V 151P	3.2V 151P
3.2V 152P	
6.4V 251P	

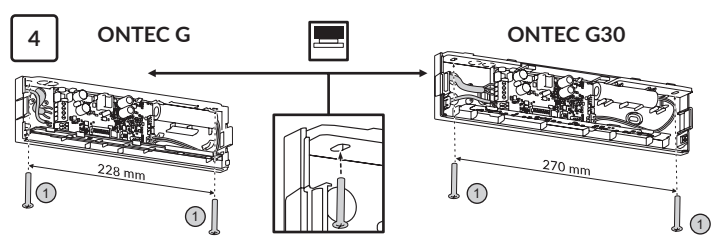


11

tc	ONTEC G / ONTEC G30	PCB	°C	tc	ONTEC G / ONTEC G30	PCB	°C
1	CB			7	CBA	010312	80
2	101, 301 - ST, AT, DT, D2, D2R, D3, D3R, DA, DL	010221A	75-105	8	CBA, CB+, CBM	010312A	80
3				9	CB 24/48, CBM 48	010553	115
4				10	60/180 - ST, AT, D2, D2R, D3R, TC	010371(A)	87
5	E1X, E1U - ST	010299	80	11	60/180 - ST, AT, D2, D2R, D3, D3R, DL, DB	010371C	85
6		010299A	89				

3

ONTEC G / ONTEC G30: 60/180 (AT, DT, D2, D2R, DA, D3, D3R, DL, TC, DB)		ONTEC G / ONTEC G30: 60/180 (ST)		(CBM, CBA, CB+)	
M 3h	X1A****G180	X1****G180	NM	Z0****G***	
NM 3h	X0A****G180	X0****G180			
NM 1h	X0A****G*60	X0****G*60			



8/8

TM TECHNOLOGIE
Manufacturer of emergency lighting

TM.ONTEC G
TM.ONTEC G30

30.01.2026
I.OG.V3.0

TM TECHNOLOGIE Sp. z o.o.
Morawica 355, 32-084 Morawica,
gm. Liszki, Poland.
tel.: +48 12 444 60 60
fax: +48 12 350 57 34
www.tmtechnologie.pl

IP 20 LED 850°C 1h/3h/8h G: 25 m G30: 30 m

210 ÷ 250 V AC, 50 / 60 Hz, 186 ÷ 254 V DC,
CB 24/48, CBM 48: 20 ÷ 57 V DC

ST, AT, DT, D2, D2R, D3, D3R, DA, DL, DB: +10 ÷ +35°C

TC: +10 ÷ +40°C

CB, CB+, CBM: -15 ÷ +55°C
CB 24/48, CBM 48: -25 ÷ +55°C
CBA: -10 ÷ +40°C

6M 0 ÷ +25°C
3M 0 ÷ +35°C
1M 0 ÷ +45°C

65±20 no condensing

*CB 24/48, CBM 48

